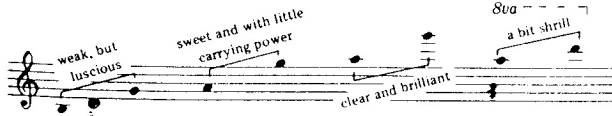


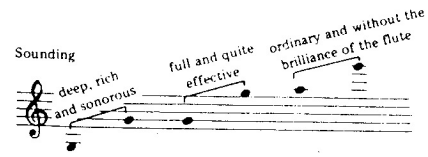
Registres des vents de l'orchestre

fl.
CT



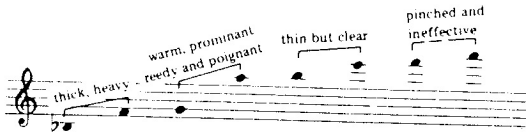
▷ piccolo + grave = ré
m registres que flut 8va

fl.
alto



sonne une quinte en-dessous

htb.

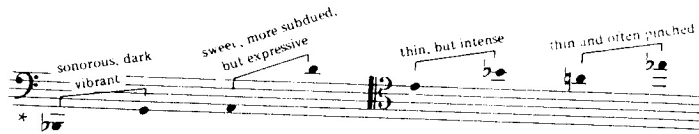


cor
ang.



(5te ↓)

bsn



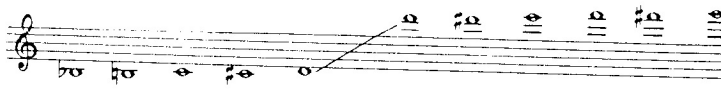
cl.

sons transposés (sonne un ton plus bas)



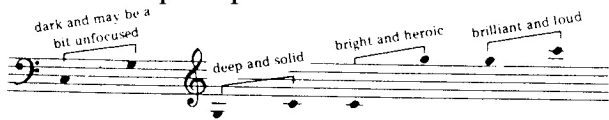
Bb: major 2nd lower
A: minor 3rd lower
D: major 2nd higher
Eb: minor 3rd higher
Clarinette basse:
major 9th lower;

sax



sonne une quinte plus bas

cor



(5te ↓)

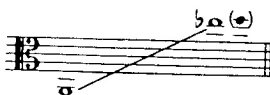
Bb Soprano: major 2nd lower
Eb Alto: major 6th lower
Bb Tenor: major 9th lower
Eb Baritone: octave and major 6th lower
Bb Bass: 2 octaves and a major 2nd lower

C: as written
Bb: major 2nd lower
D: major 2nd higher
Eb: minor 3rd higher
Cornet in Bb: major 2nd lower
Bass in C: octave lower
Bass in Bb: major 9th lower
Flugelhorn: major 2nd lower
trompette basse:
major 6th lower

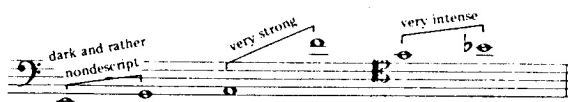
trp.



tb
alto



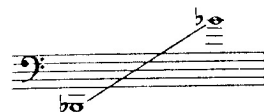
tb
tenor



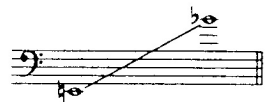
tb
basse



Euphonium



tuba bariton



tuba

